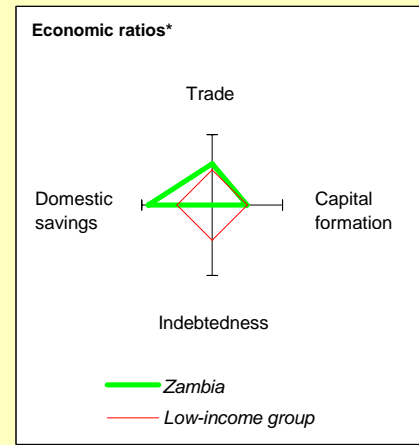
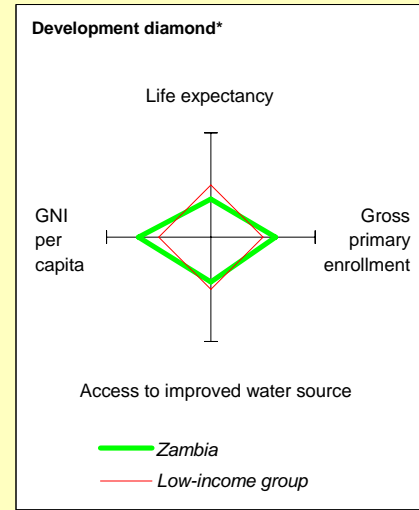


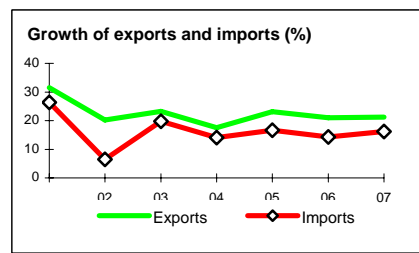
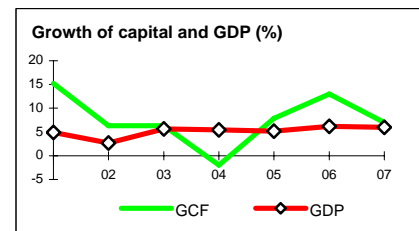
Zambia at a glance

9/24/08

POVERTY and SOCIAL	Sub-Saharan Africa				
	Zambia	Sub-Saharan Africa	Low-income		
2007					
Population, mid-year (millions)	11.9	800	1,296		
GNI per capita (Atlas method, US\$)	800	952	578		
GNI (Atlas method, US\$ billions)	9.5	762	749		
Average annual growth, 2001-07					
Population (%)	1.9	2.5	2.2		
Labor force (%)	1.8	2.6	2.7		
Most recent estimate (latest year available, 2001-07)					
Poverty (% of population below national poverty line)	68		
Urban population (% of total population)	35	36	32		
Life expectancy at birth (years)	42	51	57		
Infant mortality (per 1,000 live births)	102	94	85		
Child malnutrition (% of children under 5)	23	27	29		
Access to an improved water source (% of population)	58	58	68		
Literacy (% of population age 15+)	..	59	61		
Gross primary enrollment (% of school-age population)	117	94	94		
Male	118	99	100		
Female	116	88	89		
KEY ECONOMIC RATIOS and LONG-TERM TRENDS					
	1987	1997	2006	2007	
GDP (US\$ billions)	2.3	3.9	10.9	11.4	
Gross capital formation/GDP	12.7	14.6	22.6	24.1	
Exports of goods and services/GDP	39.5	30.1	37.8	42.3	
Gross domestic savings/GDP	16.5	10.7	30.9	30.6	
Gross national savings/GDP	0.0	3.9	23.3	22.4	
Current account balance/GDP	-15.3	-14.2	0.7	-1.1	
Interest payments/GDP	3.2	1.7	0.4	..	
Total debt/GDP	286.1	170.3	21.4	..	
Total debt service/exports	18.5	19.2	
Present value of debt/GDP	6.0	..	
Present value of debt/exports	
	1987-97	1997-07	2006	2007	2007-11
<i>(average annual growth)</i>					
GDP	0.0	4.3	6.2	6.0	6.3
GDP per capita	-2.6	2.2	4.2	4.0	5.1
Exports of goods and services	0.7	23.4	21.0	21.2	21.2



STRUCTURE of the ECONOMY	Sub-Saharan Africa			
	Zambia	Sub-Saharan Africa	Low-income	Low-mortality
<i>(% of GDP)</i>				
Agriculture	12.0	18.7	20.9	21.6
Industry	45.5	34.2	32.9	38.2
Manufacturing	28.5	13.2	10.8	11.4
Services	42.4	47.1	46.2	40.2
Household final consumption expenditure	63.1	71.8	59.1	59.0
General gov't final consumption expenditure	20.4	17.5	10.0	10.5
Imports of goods and services	35.7	34.0	29.6	35.8
<i>(average annual growth)</i>				
Agriculture	2.0	2.1	2.2	7.2
Industry	-1.9	6.3	9.1	9.0
Manufacturing	1.4	4.7	5.8	6.3
Services	-0.4	5.8	2.7	12.5
Household final consumption expenditure	0.9	5.8	-1.2	1.9
General gov't final consumption expenditure	-1.7	11.7	25.5	27.2
Gross capital formation	3.9	11.0	13.0	7.0
Imports of goods and services	2.4	19.1	14.3	16.2



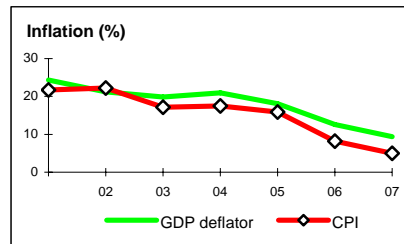
Note: 2007 data are preliminary estimates.

This table was produced from the Development Economics LDB database.

* The diamonds show four key indicators in the country (in bold) compared with its income-group average. If data are missing, the diamond will be incomplete.

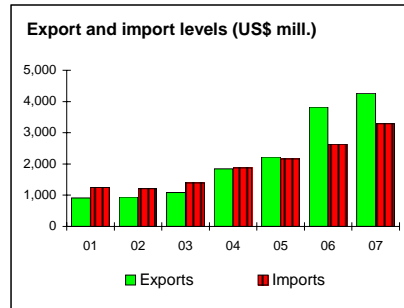
PRICES and GOVERNMENT FINANCE

	1987	1997	2006	2007
Domestic prices				
<i>(% change)</i>				
Consumer prices	..	24.4	8.2	5.0
Implicit GDP deflator	62.0	26.0	12.6	9.4
Government finance				
<i>(% of GDP, includes current grants)</i>				
Current revenue	19.8	19.9	42.7	22.5
Current budget balance	-7.3	2.3	24.2	4.3
Overall surplus/deficit	-5.8	-6.2	20.1	-1.9



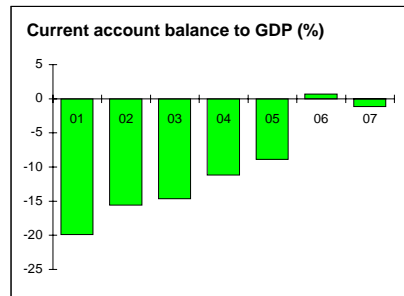
TRADE

	1987	1997	2006	2007
<i>(US\$ millions)</i>				
Total exports (fob)	867	1,119	3,819	4,258
Copper	736	623
Cobalt	51	185
Manufactures	42	180
Total imports (cif)	669	1,218	2,636	3,288
Food	11	12
Fuel and energy	67	87
Capital goods	250	388
Export price index (2000=100)	98	116	368	377
Import price index (2000=100)	86	99	165	170
Terms of trade (2000=100)	113	118	222	222



BALANCE of PAYMENTS

	1987	1997	2006	2007
<i>(US\$ millions)</i>				
Exports of goods and services	918	1,233	4,122	4,566
Imports of goods and services	892	1,521	3,223	3,868
Resource balance	27	-288	899	698
Net income	-344	-251	-1,002	-1,021
Net current transfers	-30	-16
Current account balance	-347	-555	77	-130
Financing items (net)	615	588	590	247
Changes in net reserves	-268	-33	-667	-117
Memo:				
Reserves including gold (US\$ millions)	..	238	595	749
Conversion rate (DEC, local/US\$)	9.5	1,314.5	3,603.1	4,002.5



EXTERNAL DEBT and RESOURCE FLOWS

	1987	1997	2006	2007
<i>(US\$ millions)</i>				
Total debt outstanding and disbursed	6,480	6,660	2,325	..
IBRD	555	62	0	0
IDA	260	1,493	260	323
Total debt service	171	246	154	..
IBRD	28	41	0	0
IDA	1	14	27	2
Composition of net resource flows				
Official grants	213	250	3,777	..
Official creditors	100	114	23	..
Private creditors	-39	-7	221	..
Foreign direct investment (net inflows)	75	207	575	..
Portfolio equity (net inflows)	0	1	2	..
World Bank program				
Commitments	36	136	53	25
Disbursements	51	169	40	51
Principal repayments	13	38	17	0
Net flows	38	131	23	51
Interest payments	16	16	11	2
Net transfers	22	115	13	49

