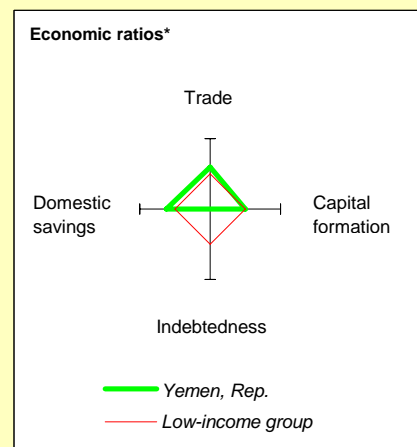
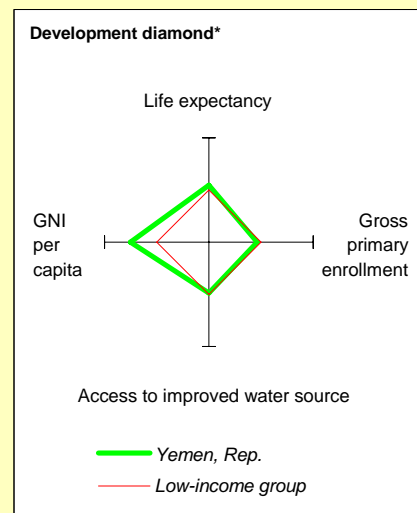


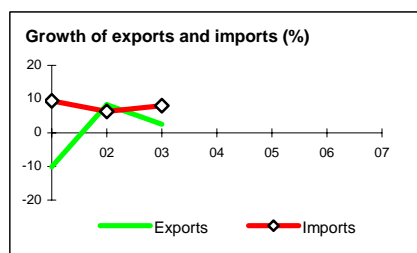
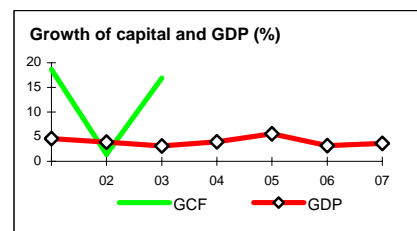
Yemen, Rep. at a glance

9/24/08

	Yemen	M. East & North Africa	Low-income		
POVERTY and SOCIAL					
2007					
Population, mid-year (<i>millions</i>)	22.4	313	1,296		
GNI per capita (<i>Atlas method, US\$</i>)	870	2,794	578		
GNI (<i>Atlas method, US\$ billions</i>)	19.4	876	749		
Average annual growth, 2001-07					
Population (%)	3.0	1.8	2.2		
Labor force (%)	4.2	3.6	2.7		
Most recent estimate (latest year available, 2001-07)					
Poverty (% of population below national poverty line)		
Urban population (% of total population)	30	57	32		
Life expectancy at birth (<i>years</i>)	62	70	57		
Infant mortality (<i>per 1,000 live births</i>)	75	34	85		
Child malnutrition (% of children under 5)	41	..	29		
Access to an improved water source (% of population)	66	89	68		
Literacy (% of population age 15+)	54	73	61		
Gross primary enrollment (% of school-age population)	87	105	94		
Male	100	108	100		
Female	74	103	89		
KEY ECONOMIC RATIOS and LONG-TERM TRENDS					
	1987	1997	2006	2007	
GDP (<i>US\$ billions</i>)	..	6.9	19.1	22.5	
Gross capital formation/GDP	..	24.7	
Exports of goods and services/GDP	..	35.8	
Gross domestic savings/GDP	..	16.0	
Gross national savings/GDP	..	25.0	
Current account balance/GDP	..	0.3	
Interest payments/GDP	..	0.4	0.3	..	
Total debt/GDP	..	55.8	29.2	..	
Total debt service/exports	..	2.6	
Present value of debt/GDP	19.5	..	
Present value of debt/exports	
	1987-97	1997-07	2006	2007	2007-11
<i>(average annual growth)</i>					
GDP	6.0	4.1	3.2	3.6	..
GDP per capita	1.5	1.0	0.1	0.6	..
Exports of goods and services	27.2	8.6



	1987	1997	2006	2007
STRUCTURE of the ECONOMY				
<i>(% of GDP)</i>				
Agriculture	..	16.3
Industry	..	43.2
Manufacturing	..	10.3
Services	..	40.5
Household final consumption expenditure	..	71.0
General gov't final consumption expenditure	..	13.0
Imports of goods and services	..	44.5
	1987-97	1997-07	2006	2007
<i>(average annual growth)</i>				
Agriculture	4.7	3.3
Industry	8.4	4.5
Manufacturing	5.0	9.9
Services	5.4	4.3
Household final consumption expenditure	3.0	1.5
General gov't final consumption expenditure	-0.1	8.7
Gross capital formation	14.6	0.8
Imports of goods and services	15.9	3.0



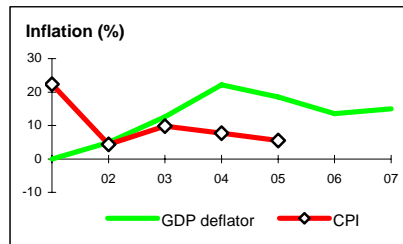
Note: 2007 data are preliminary estimates.

This table was produced from the Development Economics LDB database.

* The diamonds show four key indicators in the country (in bold) compared with its income-group average. If data are missing, the diamond will be incomplete.

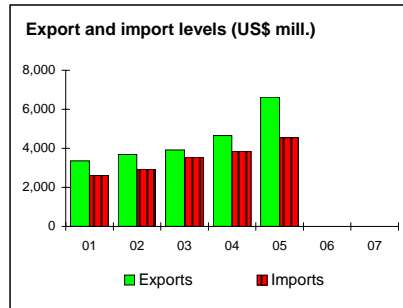
PRICES and GOVERNMENT FINANCE

	1987	1997	2006	2007
Domestic prices				
<i>(% change)</i>				
Consumer prices	..	2.2
Implicit GDP deflator	..	11.8	13.6	15.0
Government finance				
<i>(% of GDP, includes current grants)</i>				
Current revenue	..	32.0
Current budget balance	..	4.8
Overall surplus/deficit	..	-1.5



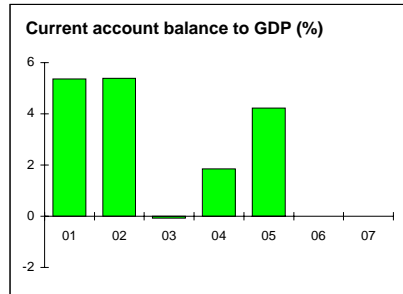
TRADE

	1987	1997	2006	2007
<i>(US\$ millions)</i>				
Total exports (fob)	..	2,274
Crude oil (government share)	..	1,012
Crude oil (company share)	..	933
Manufactures	..	26
Total imports (cif)	..	2,407
Food	..	992
Fuel and energy	..	231
Capital goods	..	440
Export price index (2000=100)	..	71
Import price index (2000=100)	..	107
Terms of trade (2000=100)	..	67



BALANCE of PAYMENTS

	1987	1997	2006	2007
<i>(US\$ millions)</i>				
Exports of goods and services	..	2,482
Imports of goods and services	..	3,084
Resource balance	..	-602
Net income	..	-601
Net current transfers	..	1,226
Current account balance	..	22
Financing items (net)	..	-50
Changes in net reserves	..	28
Memo:				
Reserves including gold (US\$ millions)	..	1,222
Conversion rate (DEC, local/US\$)	..	129.3	197.1	199.0



EXTERNAL DEBT and RESOURCE FLOWS

	1987	1997	2006	2007
<i>(US\$ millions)</i>				
Total debt outstanding and disbursed	4,585	3,874	5,563	..
IBRD	0	0	0	0
IDA	473	934	1,894	2,058
Total debt service	268	98	226	..
IBRD	0	0	0	0
IDA	6	16	45	49
Composition of net resource flows				
Official grants	241	133	139	..
Official creditors	94	87	245	..
Private creditors	174	0	7	..
Foreign direct investment (net inflows)	1	-139	1,121	..
Portfolio equity (net inflows)	0	0	0	..
World Bank program				
Commitments	66	149	98	30
Disbursements	41	89	160	122
Principal repayments	1	10	31	34
Net flows	39	79	129	88
Interest payments	4	7	15	15
Net transfers	35	72	115	73

