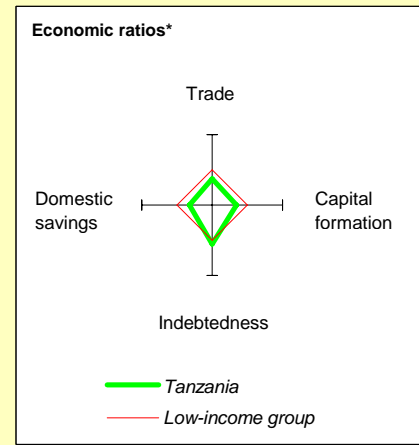
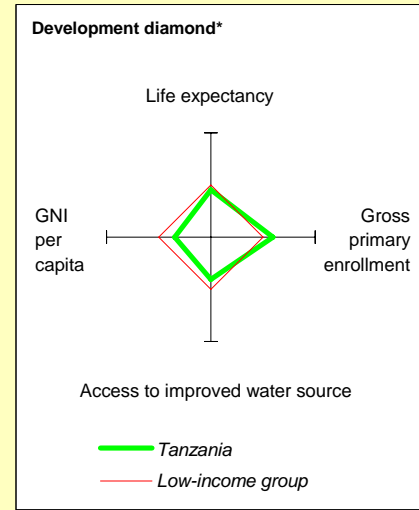


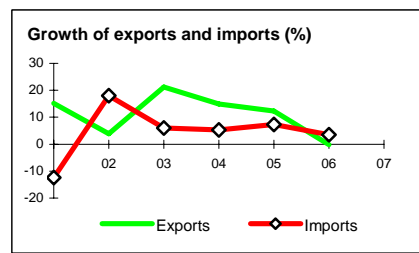
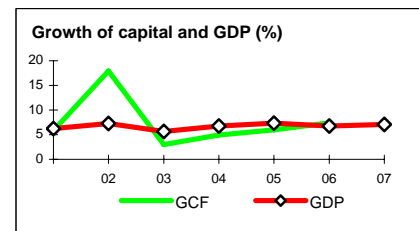
Tanzania at a glance

9/24/08

POVERTY and SOCIAL	Sub-Saharan Africa				
	Tanzania	Africa	Low-income		
2007					
Population, mid-year (<i>millions</i>)	40.4	800	1,296		
GNI per capita (<i>Atlas method, US\$</i>)	400	952	578		
GNI (<i>Atlas method, US\$ billions</i>)	16.3	762	749		
Average annual growth, 2001-07					
Population (%)	2.5	2.5	2.2		
Labor force (%)	2.4	2.6	2.7		
Most recent estimate (latest year available, 2001-07)					
Poverty (% of population below national poverty line)	36		
Urban population (% of total population)	25	36	32		
Life expectancy at birth (<i>years</i>)	52	51	57		
Infant mortality (<i>per 1,000 live births</i>)	74	94	85		
Child malnutrition (% of children under 5)	17	27	29		
Access to an improved water source (% of population)	55	58	68		
Literacy (% of population age 15+)	69	59	61		
Gross primary enrollment (% of school-age population)	112	94	94		
Male	113	99	100		
Female	111	88	89		
KEY ECONOMIC RATIOS and LONG-TERM TRENDS					
	1987	1997	2006	2007	
GDP (<i>US\$ billions</i>)	..	7.7	14.2	16.2	
Gross capital formation/GDP	..	14.9	16.7	..	
Exports of goods and services/GDP	..	16.2	21.9	..	
Gross domestic savings/GDP	..	5.4	10.8	..	
Gross national savings/GDP	..	3.8	10.7	..	
Current account balance/GDP	..	-10.4	-11.0	..	
Interest payments/GDP	..	0.5	0.3	..	
Total debt/GDP	..	89.9	29.9	..	
Total debt service/exports	35.4	12.8	3.5	..	
Present value of debt/GDP	14.0	..	
Present value of debt/exports	61.4	..	
	1987-97	1997-07	2006	2007	2007-11
<i>(average annual growth)</i>					
GDP	2.7	6.1	6.7	7.1	..
GDP per capita	-0.4	3.5	4.1	4.5	..
Exports of goods and services	14.3	10.1	-0.2



STRUCTURE of the ECONOMY	Sub-Saharan Africa			
	Tanzania	Africa	Low-income	2007
<i>(% of GDP)</i>				
Agriculture	..	46.8	45.3	..
Industry	..	14.3	17.4	..
Manufacturing	..	6.9	6.9	..
Services	..	38.9	37.3	..
Household final consumption expenditure	..	86.3	72.8	..
General gov't final consumption expenditure	..	8.3	16.3	..
Imports of goods and services	..	25.7	27.8	..
	1987-97	1997-07	2006	2007
<i>(average annual growth)</i>				
Agriculture	3.2	4.5	3.8	..
Industry	0.7	8.7	8.6	..
Manufacturing	1.0	6.9	7.1	..
Services	1.8	5.9	7.2	..
Household final consumption expenditure	3.7	2.5	6.2	..
General gov't final consumption expenditure	-9.7	17.4	11.9	..
Gross capital formation	-4.3	7.0	7.4	..
Imports of goods and services	1.4	4.5	3.6	..



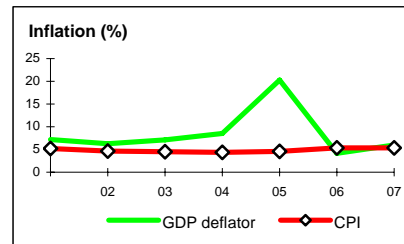
Note: 2007 data are preliminary estimates.

This table was produced from the Development Economics LDB database.

* The diamonds show four key indicators in the country (in bold) compared with its income-group average. If data are missing, the diamond will be incomplete.

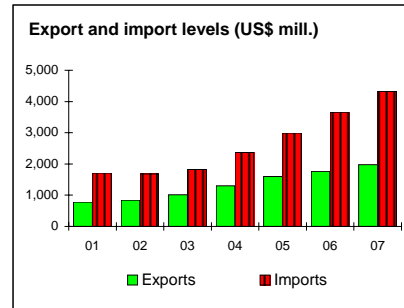
PRICES and GOVERNMENT FINANCE

	1987	1997	2006	2007
Domestic prices				
<i>(% change)</i>				
Consumer prices	29.9	15.4	5.4	5.4
Implicit GDP deflator	..	20.6	4.2	6.0
Government finance				
<i>(% of GDP, includes current grants)</i>				
Current revenue	..	12.2	11.6	12.4
Current budget balance	..	0.9	-8.0	-6.8
Overall surplus/deficit	..	-1.4	-13.6	-14.2



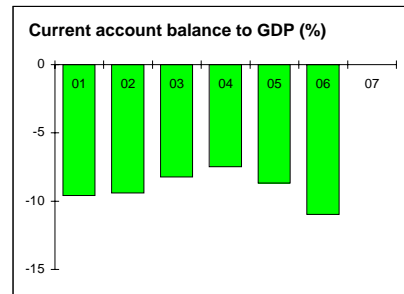
TRADE

	1987	1997	2006	2007
<i>(US\$ millions)</i>				
Total exports (fob)	348	744	1,759	1,981
Coffee	110	117	68	73
Cotton	44	130	115	126
Manufactures	63	111	143	155
Total imports (cif)	1,099	1,270	3,661	4,321
Food	86	97	212	217
Fuel and energy	157	173	1,065	1,224
Capital goods	552	514	1,155	1,232
Export price index (2000=100)	81	100	119	126
Import price index (2000=100)	113	119	166	167
Terms of trade (2000=100)	72	84	72	75



BALANCE of PAYMENTS

	1987	1997	2006	2007
<i>(US\$ millions)</i>				
Exports of goods and services	442	1,276	3,133	..
Imports of goods and services	1,277	1,948	4,565	..
Resource balance	-834	-672	-1,431	..
Net income	-149	-122	-182	..
Net current transfers	446	-3	58	..
Current account balance	-538	-797	-1,556	..
Financing items (net)	533	926	1,601	..
Changes in net reserves	5	-129	-46	..
Memo:				
Reserves including gold (US\$ millions)	32	622	2,259	2,886
Conversion rate (DEC, local/US\$)	64.3	612.1	1,251.9	1,245.0



EXTERNAL DEBT and RESOURCE FLOWS

	1987	1997	2006	2007
<i>(US\$ millions)</i>				
Total debt outstanding and disbursed	5,508	6,910	4,240	..
IBRD	325	34	0	0
IDA	801	2,306	1,056	1,585
Total debt service	156	169	113	..
IBRD	47	24	0	0
IDA	10	32	51	11
Composition of net resource flows				
Official grants	481	431	4,917	..
Official creditors	140	183	524	..
Private creditors	38	-22	1	..
Foreign direct investment (net inflows)	0	158	474	..
Portfolio equity (net inflows)	0	0	3	..
World Bank program				
Commitments	23	150	599	536
Disbursements	95	183	416	475
Principal repayments	28	36	31	1
Net flows	67	147	385	474
Interest payments	29	20	20	10
Net transfers	38	127	365	464

