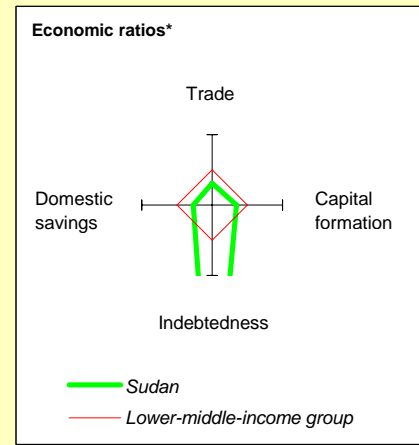
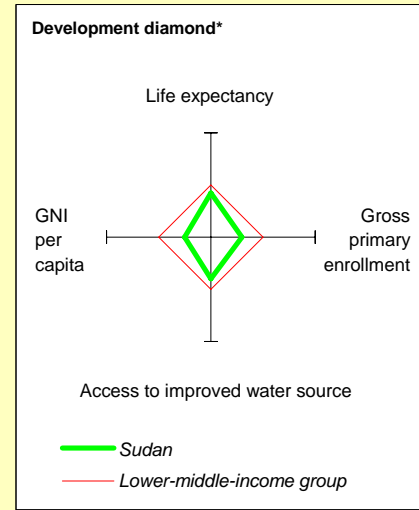


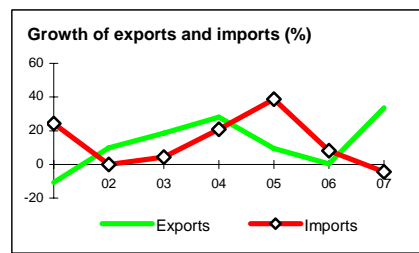
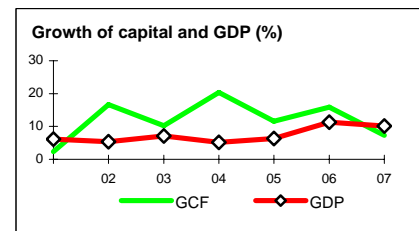
Sudan at a glance

9/24/08

POVERTY and SOCIAL	Sudan	Sub-Saharan Africa	Lower-middle-income		
2007					
Population, mid-year (<i>millions</i>)	38.6	800	3,437		
GNI per capita (<i>Atlas method, US\$</i>)	950	952	1,887		
GNI (<i>Atlas method, US\$ billions</i>)	36.7	762	6,485		
Average annual growth, 2001-07					
Population (%)	2.1	2.5	1.1		
Labor force (%)	2.7	2.6	1.5		
Most recent estimate (latest year available, 2001-07)					
Poverty (% of population below national poverty line)		
Urban population (% of total population)	43	36	42		
Life expectancy at birth (<i>years</i>)	58	51	69		
Infant mortality (<i>per 1,000 live births</i>)	61	94	41		
Child malnutrition (% of children under 5)	..	27	25		
Access to an improved water source (% of population)	70	58	88		
Literacy (% of population age 15+)	..	59	89		
Gross primary enrollment (% of school-age population)	66	94	111		
Male	71	99	112		
Female	61	88	109		
KEY ECONOMIC RATIOS and LONG-TERM TRENDS					
	1987	1997	2006	2007	
GDP (<i>US\$ billions</i>)	20.6	11.7	36.4	46.2	
Gross capital formation/GDP	15.1	15.8	24.8	24.2	
Exports of goods and services/GDP	5.5	5.3	16.5	20.1	
Gross domestic savings/GDP	9.5	8.6	13.9	20.5	
Gross national savings/GDP	12.0	9.5	9.7	11.9	
Current account balance/GDP	-2.1	-6.3	-15.1	-12.4	
Interest payments/GDP	0.1	0.0	0.1	..	
Total debt/GDP	54.5	139.8	52.6	..	
Total debt service/exports	12.0	9.0	4.8	..	
Present value of debt/GDP	56.4	..	
Present value of debt/exports	336.4	..	
	1987-97	1997-07	2006	2007	2007-11
(<i>average annual growth</i>)					
GDP	4.2	6.6	11.3	10.2	8.8
GDP per capita	1.7	4.3	8.9	7.7	7.3
Exports of goods and services	-1.2	21.7	0.4	33.6	..



STRUCTURE of the ECONOMY	1987	1997	2006	2007
(% of GDP)				
Agriculture	32.8	46.8	30.1	28.3
Industry	16.3	14.6	29.2	30.7
Manufacturing	8.8	8.8	6.3	6.1
Services	50.9	38.6	40.8	41.0
Household final consumption expenditure	77.8	86.0	69.4	64.8
General gov't final consumption expenditure	12.8	5.4	16.7	14.8
Imports of goods and services	11.1	12.5	27.5	23.9
	1987-97	1997-07	2006	2007
(<i>average annual growth</i>)				
Agriculture	4.7	2.0	4.4	3.1
Industry	4.8	12.5	16.4	20.0
Manufacturing	4.5	3.4	1.5	6.0
Services	3.0	8.2	14.1	10.0
Household final consumption expenditure	3.6	4.7	11.4	1.4
General gov't final consumption expenditure	1.3	11.4	11.7	-3.0
Gross capital formation	10.5	11.7	15.9	7.4
Imports of goods and services	3.4	14.6	8.2	-4.4



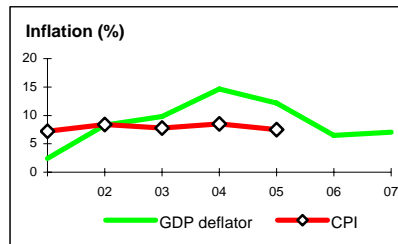
Note: 2007 data are preliminary estimates.

This table was produced from the Development Economics LDB database.

* The diamonds show four key indicators in the country (in bold) compared with its income-group average. If data are missing, the diamond will be incomplete.

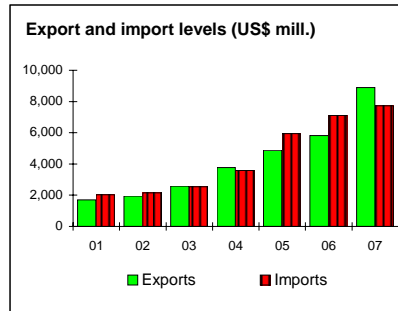
PRICES and GOVERNMENT FINANCE

	1987	1997	2006	2007
Domestic prices				
(% change)				
Consumer prices	20.6	46.7
Implicit GDP deflator	25.9	47.6	6.5	7.0
Government finance				
(% of GDP, includes current grants)				
Current revenue	11.1	5.8	20.0	19.9
Current budget balance	-11.0	-0.2	-0.4	1.0
Overall surplus/deficit	..	-0.7	-4.4	-3.1



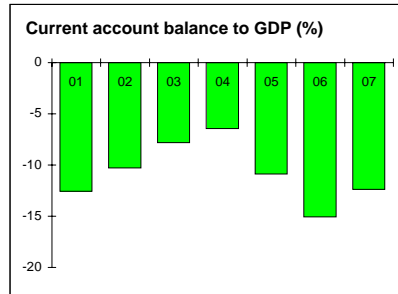
TRADE

	1987	1997	2006	2007
(US\$ millions)				
Total exports (fob)	265	594	5,813	8,902
Sesame	5,244	8,443
n.a.
Manufactures
Total imports (cif)	832	1,422	7,105	7,722
Food	140	243	656	723
Fuel and energy	184	299	364	256
Capital goods	189	261	3,785	4,099
Export price index (2000=100)	..	93
Import price index (2000=100)	..	104
Terms of trade (2000=100)	..	90



BALANCE of PAYMENTS

	1987	1997	2006	2007
(US\$ millions)				
Exports of goods and services	450	624	6,015	9,287
Imports of goods and services	923	1,462	9,995	11,041
Resource balance	-474	-838	-3,980	-1,754
Net income	-629	-345	-2,898	-4,546
Net current transfers	676	452	1,390	582
Current account balance	-427	-731	-5,489	-5,718
Financing items (net)	176	754	5,519	..
Changes in net reserves	250	-23	-30	..
Memo:				
Reserves including gold (US\$ millions)	77	82
Conversion rate (DEC, local/US\$)	1.76E-3	1.6	2.2	2.0



EXTERNAL DEBT and RESOURCE FLOWS

	1987	1997	2006	2007
(US\$ millions)				
Total debt outstanding and disbursed	11,249	16,326	19,158	..
IBRD	49	6	0	0
IDA	688	1,198	1,271	1,307
Total debt service	97	58	292	..
IBRD	8	0	0	0
IDA	8	0	3	0
Composition of net resource flows				
Official grants	564	118	1,776	..
Official creditors	160	5	93	..
Private creditors	0	0	0	..
Foreign direct investment (net inflows)	12	98	3,534	..
Portfolio equity (net inflows)	0	0	-35	..
World Bank program				
Commitments	49	0	0	0
Disbursements	62	0	0	0
Principal repayments	8	0	2	0
Net flows	55	0	-2	0
Interest payments	8	0	1	0
Net transfers	46	0	-3	0

