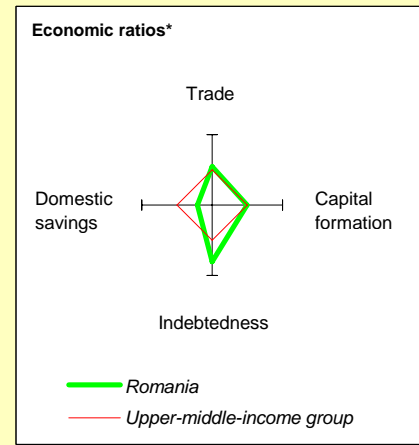
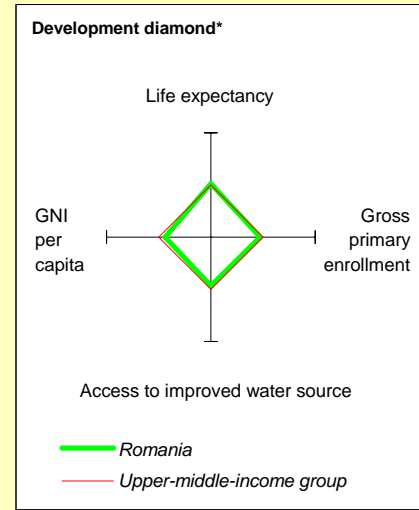


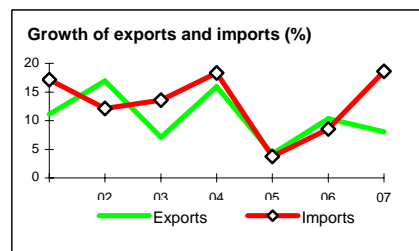
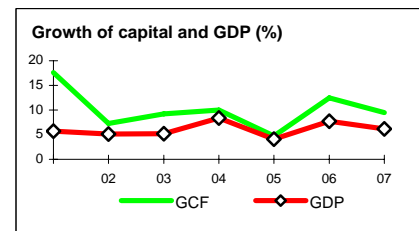
# Romania at a glance

9/24/08

	Romania	Europe & Central Asia	Upper-middle-income		
<b>POVERTY and SOCIAL</b>					
<b>2007</b>					
Population, mid-year (millions)	21.5	445	823		
GNI per capita (Atlas method, US\$)	6,150	6,052	6,987		
GNI (Atlas method, US\$ billions)	132.5	2,694	5,750		
<b>Average annual growth, 2001-07</b>					
Population (%)	-0.4	0.0	0.7		
Labor force (%)	-2.2	0.5	1.3		
<b>Most recent estimate (latest year available, 2001-07)</b>					
Poverty (% of population below national poverty line)	..	..	..		
Urban population (% of total population)	54	64	75		
Life expectancy at birth (years)	72	69	71		
Infant mortality (per 1,000 live births)	16	23	22		
Child malnutrition (% of children under 5)	4	..	..		
Access to an improved water source (% of population)	88	95	95		
Literacy (% of population age 15+)	97	97	93		
Gross primary enrollment (% of school-age population)	105	97	111		
Male	105	98	112		
Female	104	96	109		
<b>KEY ECONOMIC RATIOS and LONG-TERM TRENDS</b>					
	<b>1987</b>	<b>1997</b>	<b>2006</b>	<b>2007</b>	
GDP (US\$ billions)	38.1	35.3	121.6	166.0	
Gross capital formation/GDP	..	20.6	23.9	22.4	
Exports of goods and services/GDP	..	29.2	34.0	26.2	
Gross domestic savings/GDP	..	13.6	13.5	9.6	
Gross national savings/GDP	..	14.3	12.6	10.2	
Current account balance/GDP	5.4	-6.1	-9.7	-13.7	
Interest payments/GDP	1.3	1.4	1.2	..	
Total debt/GDP	17.3	27.3	45.3	..	
Total debt service/exports	21.9	32.7	21.7	..	
Present value of debt/GDP	..	..	45.9	..	
Present value of debt/exports	..	..	139.7	..	
	<b>1987-97</b>	<b>1997-07</b>	<b>2006</b>	<b>2007</b>	<b>2007-11</b>
<i>(average annual growth)</i>					
GDP	-2.6	4.4	7.7	6.2	5.5
GDP per capita	-2.4	5.0	7.9	6.4	5.7
Exports of goods and services	8.3	11.4	10.3	8.0	7.1



	1987	1997	2006	2007
<b>STRUCTURE of the ECONOMY</b>				
<i>(% of GDP)</i>				
Agriculture	..	19.6	10.5	8.3
Industry	..	39.2	37.9	26.4
Manufacturing	..	28.0	25.5	21.9
Services	..	41.2	51.5	65.4
Household final consumption expenditure	..	74.2	73.5	76.5
General gov't final consumption expenditure	..	12.3	13.0	13.8
Imports of goods and services	..	36.2	44.5	39.0
	<b>1987-97</b>	<b>1997-07</b>	<b>2006</b>	<b>2007</b>
<i>(average annual growth)</i>				
Agriculture	1.9	3.8	3.0	-1.0
Industry	-4.3	4.5	6.0	6.0
Manufacturing	..	..	6.0	6.0
Services	1.4	4.3	5.0	2.2
Household final consumption expenditure	1.3	5.3	5.4	8.5
General gov't final consumption expenditure	3.3	4.7	11.0	23.1
Gross capital formation	-5.2	8.4	12.5	9.5
Imports of goods and services	4.0	13.0	8.6	18.6



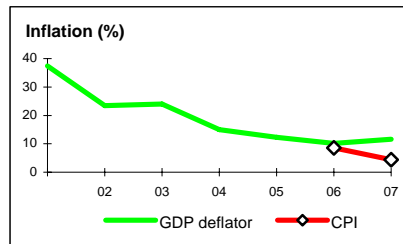
Note: 2007 data are preliminary estimates.

This table was produced from the Development Economics LDB database.

\* The diamonds show four key indicators in the country (in bold) compared with its income-group average. If data are missing, the diamond will be incomplete.

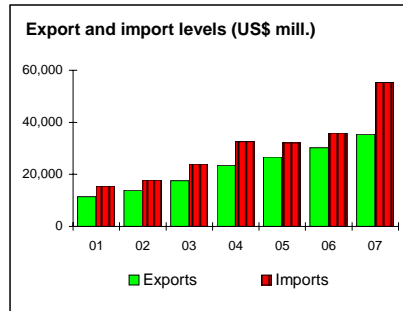
## PRICES and GOVERNMENT FINANCE

	1987	1997	2006	2007
<b>Domestic prices</b>				
(% change)				
Consumer prices	..	..	8.6	4.3
Implicit GDP deflator	0.0	147.3	10.1	11.6
<b>Government finance</b>				
(% of GDP, includes current grants)				
Current revenue	50.4	28.4	29.9	30.7
Current budget balance	32.2	-0.1	1.9	1.1
Overall surplus/deficit	15.2	-5.3	..	-2.2



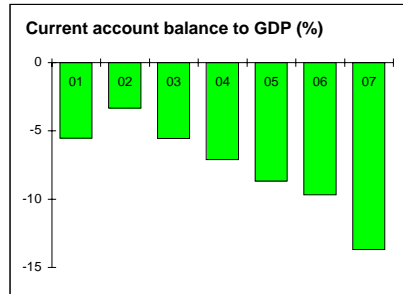
## TRADE

	1987	1997	2006	2007
(US\$ millions)				
Total exports (fob)	10,491	8,431	30,206	35,400
Basic metals and articles	..	1,556	..	..
Mineral products	..	638	..	..
Manufactures	7,570	5,303	22,853	34,191
Total imports (cif)	8,313	11,280	35,859	55,309
Food	..	694	..	..
Fuel and energy	..	2,408	..	..
Capital goods	2,101	2,977	14,673	10,582
Export price index (2000=100)	..	118	1	1
Import price index (2000=100)	..	133	1	1
Terms of trade (2000=100)	..	89	88	90



## BALANCE of PAYMENTS

	1987	1997	2006	2007
(US\$ millions)				
Exports of goods and services	11,261	9,955	36,247	42,664
Imports of goods and services	8,828	12,349	47,381	63,423
Resource balance	2,433	-2,394	-11,134	-20,758
Net income	-390	-322	-2,817	-8,963
Net current transfers	0	579	2,180	7,008
Current account balance	2,043	-2,137	-11,771	-22,714
Financing items (net)	-1,002	3,802	12,792	32,046
Changes in net reserves	-1,041	-1,665	-1,021	-9,333
<b>Memo:</b>				
Reserves including gold (US\$ millions)	..	3,061	20,730	39,423
Conversion rate (DEC, local/US\$)	2.22E-3	0.7	2.8	2.4



## EXTERNAL DEBT and RESOURCE FLOWS

	1987	1997	2006	2007
(US\$ millions)				
Total debt outstanding and disbursed	6,580	9,637	55,114	..
IBRD	2,039	1,305	2,481	2,604
IDA	0	0	0	0
Total debt service	2,493	3,321	8,678	..
IBRD	373	99	306	342
IDA	0	0	0	0
Composition of net resource flows				
Official grants	0	127	0	..
Official creditors	-430	347	141	..
Private creditors	-1,023	647	4,800	..
Foreign direct investment (net inflows)	..	1,215	11,394	..
Portfolio equity (net inflows)	0	195	301	..
World Bank program				
Commitments	0	620	538	133
Disbursements	0	399	140	232
Principal repayments	215	28	195	211
Net flows	-215	371	-54	21
Interest payments	158	70	111	132
Net transfers	-373	301	-165	-110

