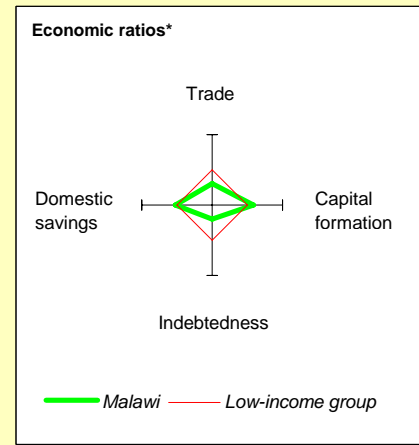
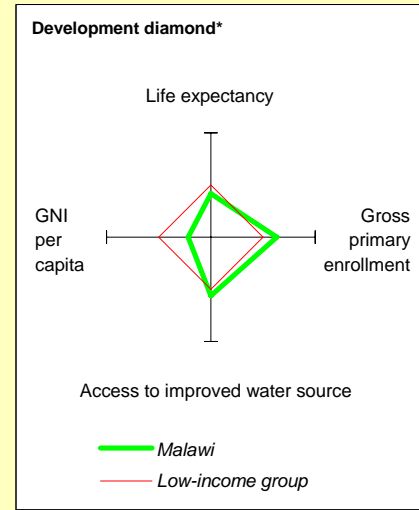


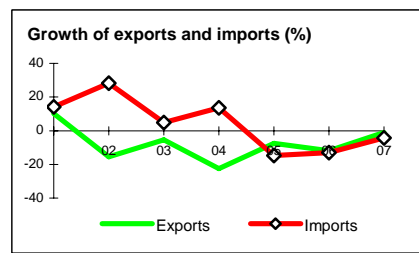
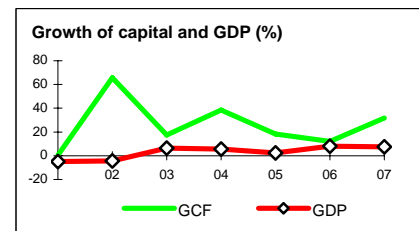
# Malawi at a glance

9/24/08

POVERTY and SOCIAL	Malawi	Sub-Saharan Africa	Low-income		
	<b>2007</b>				
Population, mid-year ( <i>millions</i> )	13.9	800	1,296		
GNI per capita ( <i>Atlas method, US\$</i> )	250	952	578		
GNI ( <i>Atlas method, US\$ billions</i> )	3.5	762	749		
<b>Average annual growth, 2001-07</b>					
Population (%)	2.6	2.5	2.2		
Labor force (%)	2.3	2.6	2.7		
<b>Most recent estimate (latest year available, 2001-07)</b>					
Poverty (% of population below national poverty line)	..	..	..		
Urban population (% of total population)	18	36	32		
Life expectancy at birth ( <i>years</i> )	48	51	57		
Infant mortality ( <i>per 1,000 live births</i> )	76	94	85		
Child malnutrition (% of children under 5)	18	27	29		
Access to an improved water source (% of population)	76	58	68		
Literacy (% of population age 15+)	..	59	61		
Gross primary enrollment (% of school-age population)	119	94	94		
Male	117	99	100		
Female	121	88	89		
<b>KEY ECONOMIC RATIOS and LONG-TERM TRENDS</b>					
	<b>1987</b>	<b>1997</b>	<b>2006</b>	<b>2007</b>	
GDP ( <i>US\$ billions</i> )	1.2	2.7	3.2	3.6	
Gross capital formation/GDP	17.3	11.6	23.7	28.5	
Exports of goods and services/GDP	25.5	21.4	17.0	14.9	
Gross domestic savings/GDP	14.9	-0.6	11.2	17.6	
Gross national savings/GDP	..	-2.9	15.5	21.9	
Current account balance/GDP	-5.1	-14.5	-19.4	-15.0	
Interest payments/GDP	2.4	1.0	0.6	..	
Total debt/GDP	115.5	83.6	26.9	..	
Total debt service/exports	38.0	14.2	11.5	..	
Present value of debt/GDP	..	..	5.5	..	
Present value of debt/exports	..	..	22.3	..	
	<b>1987-97</b>	<b>1997-07</b>	<b>2006</b>	<b>2007</b>	<b>2007-11</b>
( <i>average annual growth</i> )					
GDP	3.3	2.1	7.9	7.4	4.7
GDP per capita	1.0	-0.6	5.2	4.7	4.4
Exports of goods and services	3.5	-7.9	-11.8	-1.1	-5.3



STRUCTURE of the ECONOMY	1987	1997	2006	2007
(% of GDP)				
Agriculture	49.0	32.6	34.2	34.3
Industry	24.9	18.1	19.7	20.4
Manufacturing	16.8	13.5	13.6	14.1
Services	26.1	49.3	46.1	45.3
Household final consumption expenditure	66.0	83.1	77.0	70.8
General gov't final consumption expenditure	19.1	17.5	11.8	11.6
Imports of goods and services	27.8	33.6	29.4	25.8
	<b>1987-97</b>	<b>1997-07</b>	<b>2006</b>	<b>2007</b>
( <i>average annual growth</i> )				
Agriculture	4.9	1.2	11.9	5.9
Industry	3.1	2.0	1.0	8.5
Manufacturing	2.2	0.0	5.8	9.1
Services	2.5	1.9	7.9	4.0
Household final consumption expenditure	7.6	-0.6	-5.0	-11.6
General gov't final consumption expenditure	-2.6	3.5	11.7	5.1
Gross capital formation	-5.7	17.1	12.0	31.8
Imports of goods and services	2.7	1.7	-13.1	-4.2



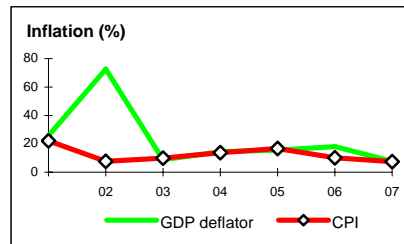
Note: 2007 data are preliminary estimates.

This table was produced from the Development Economics LDB database.

\* The diamonds show four key indicators in the country (in bold) compared with its income-group average. If data are missing, the diamond will be incomplete.

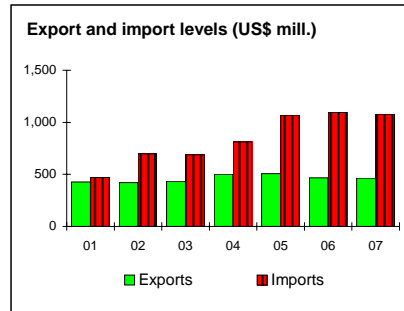
## PRICES and GOVERNMENT FINANCE

	1987	1997	2006	2007
<b>Domestic prices</b>				
(% change)				
Consumer prices	25.2	15.2	10.1	7.5
Implicit GDP deflator	16.7	20.8	18.0	7.6
<b>Government finance</b>				
(% of GDP, includes current grants)				
Current revenue	22.3	14.4	17.4	13.1
Current budget balance	-2.1	-4.1	3.8	-5.1
Overall surplus/deficit	-10.8	-8.6	-3.7	-14.0



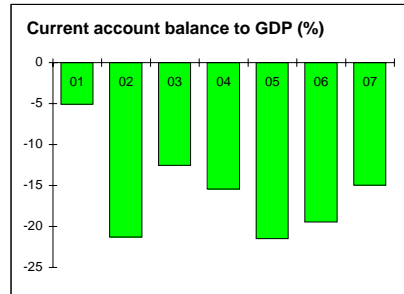
## TRADE

	1987	1997	2006	2007
(US\$ millions)				
Total exports (fob)	278	530	467	464
Tobacco	173	346	245	233
Tea	28	42	43	50
Manufactures	39	72	114	122
Total imports (cif)	291	783	1,094	1,079
Food	2	168	234	231
Fuel and energy	40	75	104	103
Capital goods	82	260	363	358
Export price index (2000=100)	102	123	102	102
Import price index (2000=100)	64	99	96	95
Terms of trade (2000=100)	159	125	106	108



## BALANCE of PAYMENTS

	1987	1997	2006	2007
(US\$ millions)				
Exports of goods and services	301	569	594	647
Imports of goods and services	324	895	1,344	1,333
Resource balance	-23	-326	-750	-686
Net income	-57	-41	-38	-22
Net current transfers	..	-19	173	177
Current account balance	-60	-386	-615	-531
Financing items (net)	86	333	649	572
Changes in net reserves	-26	53	-34	-40
<b>Memo:</b>				
Reserves including gold (US\$ millions)	58	146	142	227
Conversion rate (DEC, local/US\$)	2.2	16.4	136.0	140.0



## EXTERNAL DEBT and RESOURCE FLOWS

	1987	1997	2006	2007
(US\$ millions)				
Total debt outstanding and disbursed	1,367	2,226	850	..
IBRD	104	34	0	0
IDA	509	1,375	157	178
Total debt service	116	85	90	..
IBRD	14	8	0	0
IDA	5	18	37	1
Composition of net resource flows				
Official grants	138	118	2,664	..
Official creditors	83	131	34	..
Private creditors	-11	-1	-2	..
Foreign direct investment (net inflows)	0	15	30	..
Portfolio equity (net inflows)	4	0	0	..
World Bank program				
Commitments	78	16	0	27
Disbursements	55	107	46	14
Principal repayments	8	15	26	0
Net flows	47	92	20	14
Interest payments	12	12	11	1
Net transfers	35	80	10	12

