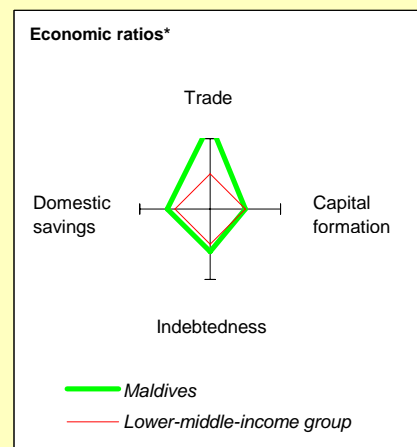
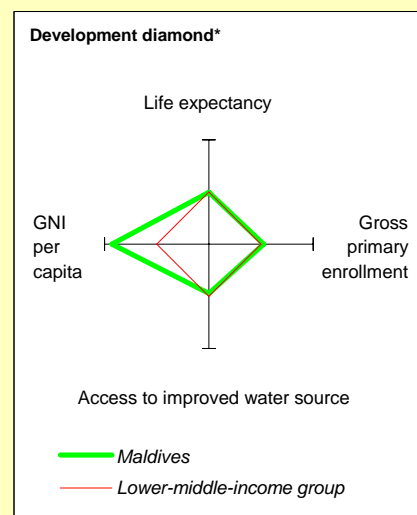


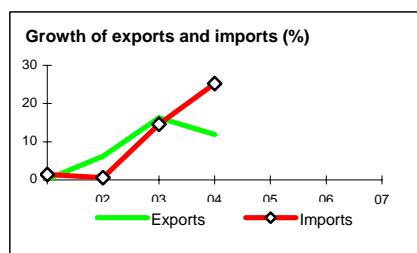
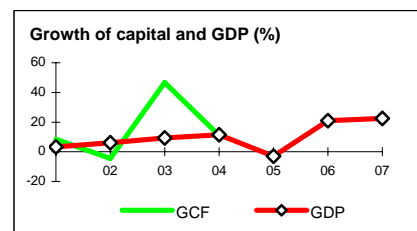
Maldives at a glance

9/24/08

POVERTY and SOCIAL	Maldives	South Asia	Lower-middle-income		
2007					
Population, mid-year (<i>millions</i>)	0.31	1,520	3,437		
GNI per capita (<i>Atlas method, US\$</i>)	3,510	880	1,887		
GNI (<i>Atlas method, US\$ billions</i>)	1.1	1,339	6,485		
Average annual growth, 2001-07					
Population (%)	1.6	1.6	1.1		
Labor force (%)	5.4	2.1	1.5		
Most recent estimate (latest year available, 2001-07)					
Poverty (% of population below national poverty line)		
Urban population (% of total population)	37	29	42		
Life expectancy at birth (<i>years</i>)	68	64	69		
Infant mortality (<i>per 1,000 live births</i>)	26	62	41		
Child malnutrition (% of children under 5)	26	41	25		
Access to an improved water source (% of population)	83	87	88		
Literacy (% of population age 15+)	..	58	89		
Gross primary enrollment (% of school-age population)	116	108	111		
Male	118	111	112		
Female	114	104	109		
KEY ECONOMIC RATIOS and LONG-TERM TRENDS					
	1987	1997	2006	2007	
GDP (<i>US\$ billions</i>)	0.14	0.51	0.93	1.1	
Gross capital formation/GDP	..	33.2	
Exports of goods and services/GDP	78.7	91.2	
Gross domestic savings/GDP	..	45.9	
Gross national savings/GDP	..	38.4	
Current account balance/GDP	5.7	-6.7	-39.8	-39.3	
Interest payments/GDP	1.1	0.8	1.1	..	
Total debt/GDP	51.6	33.7	49.5	..	
Total debt service/exports	6.5	6.9	4.8	..	
Present value of debt/GDP	41.4	..	
Present value of debt/exports	53.9	..	
	1987-97	1997-07	2006	2007	2007-11
(<i>average annual growth</i>)					
GDP	..	7.7	20.9	22.5	4.1
GDP per capita	..	6.0	18.9	20.5	1.7
Exports of goods and services	..	7.2



STRUCTURE of the ECONOMY	1987	1997	2006	2007
(% of GDP)				
Agriculture
Industry
Manufacturing
Services
Household final consumption expenditure	..	36.4
General gov't final consumption expenditure	..	17.7
Imports of goods and services	67.2	78.5
	1987-97	1997-07	2006	2007
(<i>average annual growth</i>)				
Agriculture	2.7	5.2	-0.7	0.5
Industry	9.3	8.5	10.6	8.0
Manufacturing	6.3	5.2	7.3	5.1
Services	8.9	6.2	24.0	7.9
Household final consumption expenditure	..	2.9
General gov't final consumption expenditure	..	9.7
Gross capital formation	..	6.7
Imports of goods and services	..	5.8



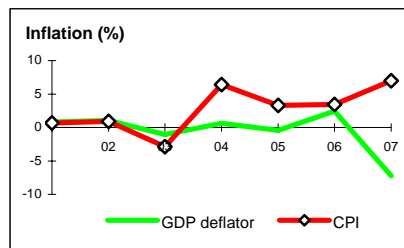
Note: 2007 data are preliminary estimates.

This table was produced from the Development Economics LDB database.

* The diamonds show four key indicators in the country (in bold) compared with its income-group average. If data are missing, the diamond will be incomplete.

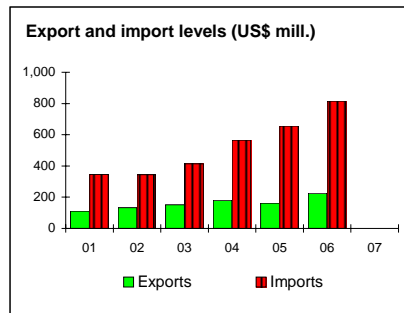
PRICES and GOVERNMENT FINANCE

	1987	1997	2006	2007
Domestic prices				
<i>(% change)</i>				
Consumer prices	..	7.6	3.5	7.0
Implicit GDP deflator	..	1.2	2.5	-7.2
Government finance				
<i>(% of GDP, includes current grants)</i>				
Current revenue	..	30.5	61.4	59.9
Current budget balance	..	10.7	6.0	9.6
Overall surplus/deficit	..	-1.4	-7.1	-27.4



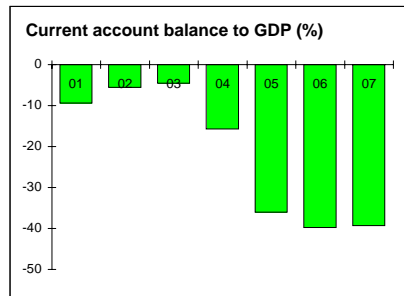
TRADE

	1987	1997	2006	2007
<i>(US\$ millions)</i>				
Total exports (fob)	..	93	225	..
Marine exports	..	58	133	..
Garments	..	15
Manufactures
Total imports (cif)	..	307	815	..
Food	141	..
Fuel and energy	..	39	181	..
Capital goods
Export price index (2000=100)	..	102
Import price index (2000=100)	..	101
Terms of trade (2000=100)	..	101



BALANCE of PAYMENTS

	1987	1997	2006	2007
<i>(US\$ millions)</i>				
Exports of goods and services	111	405	698	675
Imports of goods and services	95	401	1,048	1,062
Resource balance	16	4	-350	-387
Net income	-16	-27	-41	-48
Net current transfers	7	-11	22	49
Current account balance	8	-34	-369	-415
Financing items (net)	-7	62	414	439
Changes in net reserves	-1	-27	-45	-24
Memo:				
Reserves including gold (US\$ millions)	8	98	231	256
Conversion rate (DEC, local/US\$)	9.2	11.8	12.8	12.8



EXTERNAL DEBT and RESOURCE FLOWS

	1987	1997	2006	2007
<i>(US\$ millions)</i>				
Total debt outstanding and disbursed	73	171	459	..
IBRD	0	0	0	0
IDA	7	39	70	77
Total debt service	7	29	35	..
IBRD	0	0	0	0
IDA	0	0	2	2
Composition of net resource flows				
Official grants	10	13	21	..
Official creditors	0	2	37	..
Private creditors	-1	6	4	..
Foreign direct investment (net inflows)	5	11	14	..
Portfolio equity (net inflows)	0	0	0	..
World Bank program				
Commitments	0	0	7	0
Disbursements	1	4	3	5
Principal repayments	0	0	1	1
Net flows	1	4	2	4
Interest payments	0	0	1	1
Net transfers	1	3	2	4

