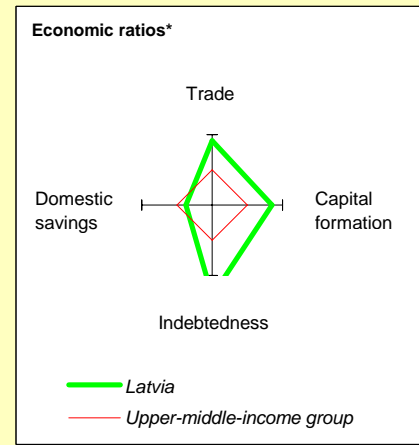
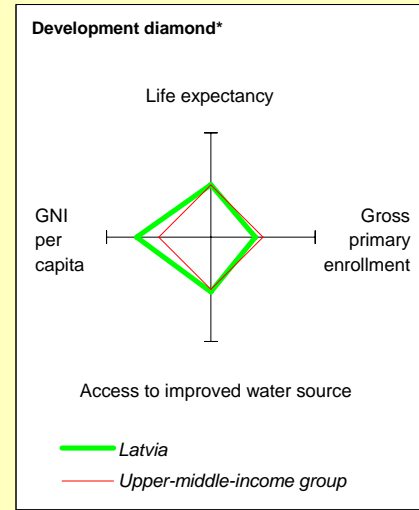


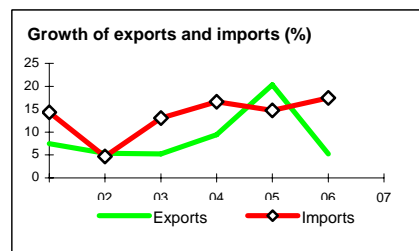
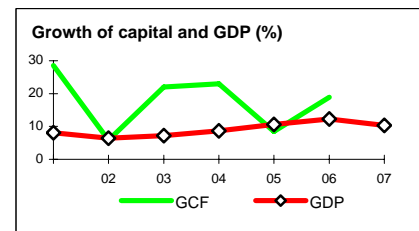
Latvia at a glance

9/24/08

	Latvia	Europe & Central Asia	Upper-middle-income		
POVERTY and SOCIAL					
2007					
Population, mid-year (millions)	2.3	445	823		
GNI per capita (Atlas method, US\$)	9,930	6,052	6,987		
GNI (Atlas method, US\$ billions)	22.6	2,694	5,750		
Average annual growth, 2001-07					
Population (%)	-0.6	0.0	0.7		
Labor force (%)	0.0	0.5	1.3		
Most recent estimate (latest year available, 2001-07)					
Poverty (% of population below national poverty line)	6		
Urban population (% of total population)	68	64	75		
Life expectancy at birth (years)	71	69	71		
Infant mortality (per 1,000 live births)	8	23	22		
Child malnutrition (% of children under 5)		
Access to an improved water source (% of population)	99	95	95		
Literacy (% of population age 15+)	..	97	93		
Gross primary enrollment (% of school-age population)	95	97	111		
Male	96	98	112		
Female	93	96	109		
KEY ECONOMIC RATIOS and LONG-TERM TRENDS					
	1987	1997	2006	2007	
GDP (US\$ billions)	5.7	6.1	19.9	27.2	
Gross capital formation/GDP	37.0	19.5	38.4	..	
Exports of goods and services/GDP	..	46.8	44.6	..	
Gross domestic savings/GDP	34.9	11.7	17.2	..	
Gross national savings/GDP	..	13.9	16.9	..	
Current account balance/GDP	..	-5.6	-21.5	..	
Interest payments/GDP	..	0.7	1.5	..	
Total debt/GDP	..	45.0	114.3	..	
Total debt service/exports	..	9.0	33.5	..	
Present value of debt/GDP	109.6	..	
Present value of debt/exports	223.3	..	
	1987-97	1997-07	2006	2007	2007-11
<i>(average annual growth)</i>					
GDP	-6.8	8.0	12.2	10.3	..
GDP per capita	-6.0	8.7	12.9	10.9	..
Exports of goods and services	2.6	7.1	5.3



	1987	1997	2006	2007
STRUCTURE of the ECONOMY				
<i>(% of GDP)</i>				
Agriculture	18.0	5.1	3.7	..
Industry	46.0	29.5	21.5	..
Manufacturing	40.1	20.2	11.8	..
Services	35.9	65.4	74.8	..
Household final consumption expenditure	55.3	67.4	65.8	..
General gov't final consumption expenditure	9.8	20.8	17.0	..
Imports of goods and services	..	54.7	64.9	..
	1987-97	1997-07	2006	2007
<i>(average annual growth)</i>				
Agriculture	-8.2	3.4	-0.3	..
Industry	-14.1	6.8	8.2	..
Manufacturing	-11.9	5.9	6.2	..
Services	-1.0	8.0	13.1	..
Household final consumption expenditure	-10.0	8.0	19.8	..
General gov't final consumption expenditure	1.4	1.9	4.0	..
Gross capital formation	-19.6	16.1	18.9	..
Imports of goods and services	5.1	9.8	17.5	..



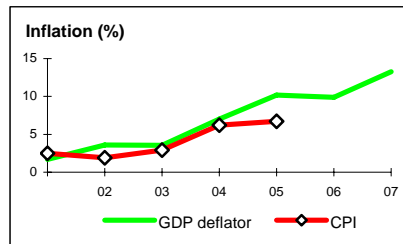
Note: 2007 data are preliminary estimates.

This table was produced from the Development Economics LDB database.

* The diamonds show four key indicators in the country (in bold) compared with its income-group average. If data are missing, the diamond will be incomplete.

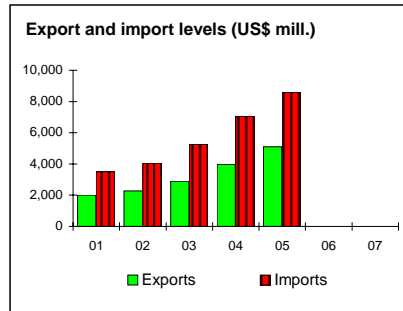
PRICES and GOVERNMENT FINANCE

	1987	1997	2006	2007
Domestic prices				
<i>(% change)</i>				
Consumer prices	..	8.4
Implicit GDP deflator	-0.8	7.0	9.9	13.3
Government finance				
<i>(% of GDP, includes current grants)</i>				
Current revenue	..	36.7	36.1	..
Current budget balance	..	3.9	-0.3	..
Overall surplus/deficit	..	2.6	-0.9	..



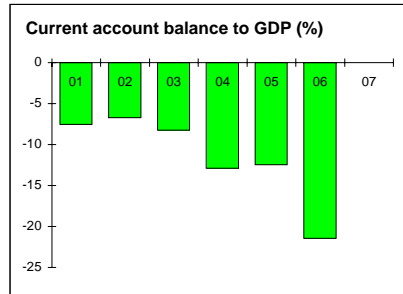
TRADE

	1987	1997	2006	2007
<i>(US\$ millions)</i>				
Total exports (fob)	..	1,672
n.a.
n.a.
Manufactures	..	990
Total imports (cif)	..	2,721
Food
Fuel and energy
Capital goods
Export price index (2000=100)	..	105
Import price index (2000=100)	..	101
Terms of trade (2000=100)	..	105



BALANCE of PAYMENTS

	1987	1997	2006	2007
<i>(US\$ millions)</i>				
Exports of goods and services	..	2,871	8,720	..
Imports of goods and services	..	3,348	12,976	..
Resource balance	..	-477	-4,256	..
Net income	..	55	-505	..
Net current transfers	..	77	481	..
Current account balance	..	-345	-4,280	..
Financing items (net)	..	447	2,302	..
Changes in net reserves	..	-102	1,979	..
Memo:				
Reserves including gold (US\$ millions)	..	968
Conversion rate (DEC, local/US\$)	8.28E-3	0.6	0.6	0.5



EXTERNAL DEBT and RESOURCE FLOWS

	1987	1997	2006	2007
<i>(US\$ millions)</i>				
Total debt outstanding and disbursed	..	2,759	22,795	..
IBRD	..	120	100	85
IDA	..	0	0	0
Total debt service	..	276	3,279	..
IBRD	..	6	24	27
IDA	..	0	0	0
Composition of net resource flows				
Official grants	..	50	0	..
Official creditors	..	63	95	..
Private creditors	..	125	4,227	..
Foreign direct investment (net inflows)	..	521	1,664	..
Portfolio equity (net inflows)	..	6	22	..
World Bank program				
Commitments	..	38	0	0
Disbursements	..	53	0	0
Principal repayments	..	0	19	22
Net flows	..	53	-19	-22
Interest payments	..	6	5	5
Net transfers	..	47	-24	-27

