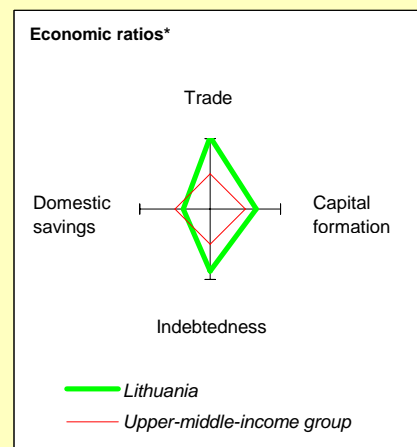
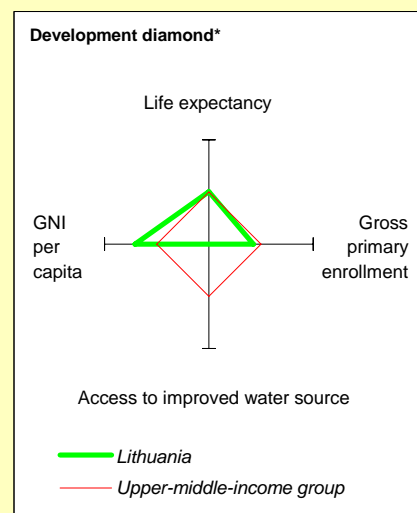


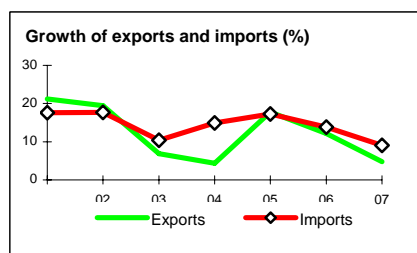
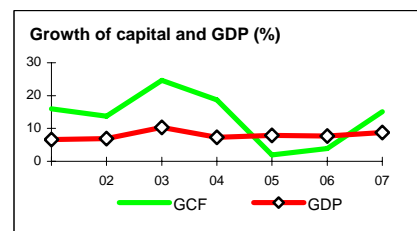
Lithuania at a glance

9/24/08

	Lithuania	Europe & Central Asia	Upper-middle-income		
POVERTY and SOCIAL					
2007					
Population, mid-year (<i>millions</i>)	3.4	445	823		
GNI per capita (<i>Atlas method, US\$</i>)	9,920	6,052	6,987		
GNI (<i>Atlas method, US\$ billions</i>)	33.5	2,694	5,750		
Average annual growth, 2001-07					
Population (%)	-0.5	0.0	0.7		
Labor force (%)	-0.3	0.5	1.3		
Most recent estimate (latest year available, 2001-07)					
Poverty (% of population below national poverty line)		
Urban population (% of total population)	67	64	75		
Life expectancy at birth (<i>years</i>)	71	69	71		
Infant mortality (<i>per 1,000 live births</i>)	7	23	22		
Child malnutrition (% of children under 5)		
Access to an improved water source (% of population)	..	95	95		
Literacy (% of population age 15+)	100	97	93		
Gross primary enrollment (% of school-age population)	95	97	111		
Male	95	98	112		
Female	94	96	109		
KEY ECONOMIC RATIOS and LONG-TERM TRENDS					
	1987	1997	2006	2007	
GDP (<i>US\$ billions</i>)	..	10.0	29.8	38.3	
Gross capital formation/GDP	..	24.2	27.0	29.5	
Exports of goods and services/GDP	..	52.2	59.7	55.4	
Gross domestic savings/GDP	..	14.1	16.6	17.5	
Gross national savings/GDP	..	14.4	18.2	17.9	
Current account balance/GDP	..	-9.8	-4.8	-4.2	
Interest payments/GDP	..	1.0	0.9	..	
Total debt/GDP	..	30.4	63.7	..	
Total debt service/exports	..	10.4	33.9	..	
Present value of debt/GDP	63.8	..	
Present value of debt/exports	152.8	..	
	1987-97	1997-07	2006	2007	2007-11
<i>(average annual growth)</i>					
GDP	-7.0	6.6	7.7	8.8	..
GDP per capita	-6.5	7.2	8.3	9.4	..
Exports of goods and services	..	9.4	12.2	4.7	..



	1987	1997	2006	2007
STRUCTURE of the ECONOMY				
<i>(% of GDP)</i>				
Agriculture	..	11.4	5.1	5.2
Industry	..	31.1	33.7	33.3
Manufacturing	..	18.8	20.5	19.1
Services	..	57.6	61.2	61.5
Household final consumption expenditure	..	63.5	65.3	65.6
General gov't final consumption expenditure	..	22.4	18.0	16.9
Imports of goods and services	..	62.4	70.1	67.4
	1987-97	1997-07	2006	2007
<i>(average annual growth)</i>				
Agriculture	..	0.5	-10.7	13.4
Industry	..	7.9	10.8	7.3
Manufacturing	..	9.2	9.8	5.1
Services	..	5.9	5.8	4.5
Household final consumption expenditure	..	8.2	11.9	11.6
General gov't final consumption expenditure	..	3.0	5.5	3.8
Gross capital formation	..	9.6	3.9	15.1
Imports of goods and services	..	10.8	13.8	9.1



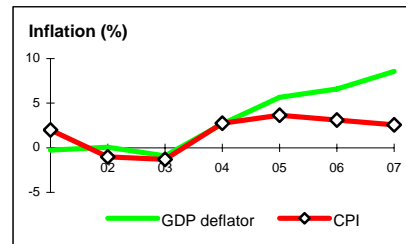
Note: 2007 data are preliminary estimates.

This table was produced from the Development Economics LDB database.

* The diamonds show four key indicators in the country (in bold) compared with its income-group average. If data are missing, the diamond will be incomplete.

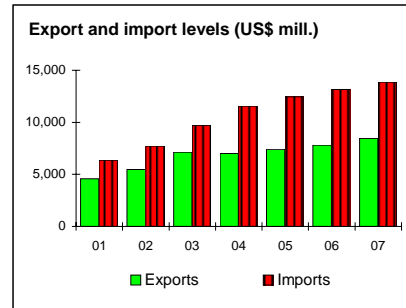
PRICES and GOVERNMENT FINANCE

	1987	1997	2006	2007
Domestic prices				
<i>(% change)</i>				
Consumer prices	..	8.9	3.1	2.6
Implicit GDP deflator	..	14.2	6.6	8.6
Government finance				
<i>(% of GDP, includes current grants)</i>				
Current revenue	..	31.3	26.9	24.5
Current budget balance	..	1.8	1.4	1.2
Overall surplus/deficit	..	-1.7	-1.7	-1.6



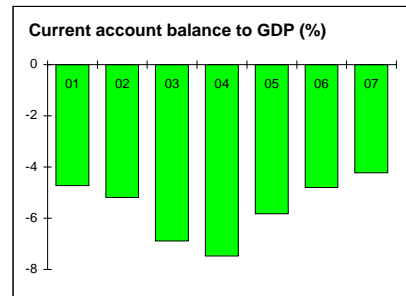
TRADE

	1987	1997	2006	2007
<i>(US\$ millions)</i>				
Total exports (fob)	..	3,863	7,803	8,438
Mineral products	..	688	1,853	2,057
Agricultural products and food	..	618	1,422	1,616
Manufactures	..	1,658	2,132	2,021
Total imports (cif)	..	5,644	13,165	13,850
Food	..	405	659	680
Fuel and energy	..	461	477	436
Capital goods	..	876	3,857	4,544
Export price index (2000=100)	..	98	90	91
Import price index (2000=100)	..	104	97	99
Terms of trade (2000=100)	..	94	93	92



BALANCE of PAYMENTS

	1987	1997	2006	2007
<i>(US\$ millions)</i>				
Exports of goods and services	..	5,224	17,747	..
Imports of goods and services	..	6,237	20,829	14,727
Resource balance	..	-1,013	-1,900	-1,772
Net income	..	-198	-827	-1,066
Net current transfers	..	230	1,298	1,220
Current account balance	..	-981	-1,429	-1,617
Financing items (net)	..	1,219	1,516	1,594
Changes in net reserves	..	-238	-87	24
Memo:				
Reserves including gold (US\$ millions)	..	1,063	3,104	3,067
Conversion rate (DEC, local/US\$)	..	4.0	2.8	2.5



EXTERNAL DEBT and RESOURCE FLOWS

	1987	1997	2006	2007
<i>(US\$ millions)</i>				
Total debt outstanding and disbursed	..	3,036	18,955	..
IBRD	..	114	81	24
IDA	..	0	0	0
Total debt service	..	549	4,216	..
IBRD	..	10	23	61
IDA	..	0	0	0
Composition of net resource flows				
Official grants	..	64	0	..
Official creditors	..	66	-184	..
Private creditors	..	685	4,478	..
Foreign direct investment (net inflows)	..	355	1,812	..
Portfolio equity (net inflows)	..	31	72	..
World Bank program				
Commitments	..	4	0	0
Disbursements	..	21	10	0
Principal repayments	..	3	19	58
Net flows	..	18	-9	-58
Interest payments	..	7	4	3
Net transfers	..	11	-12	-61

