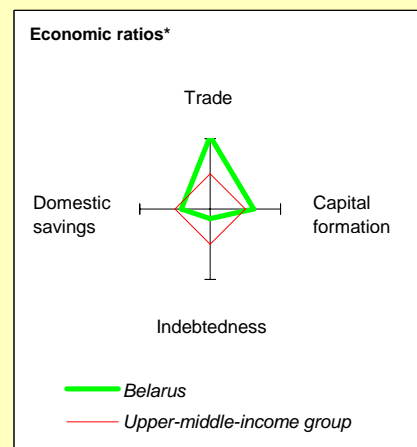
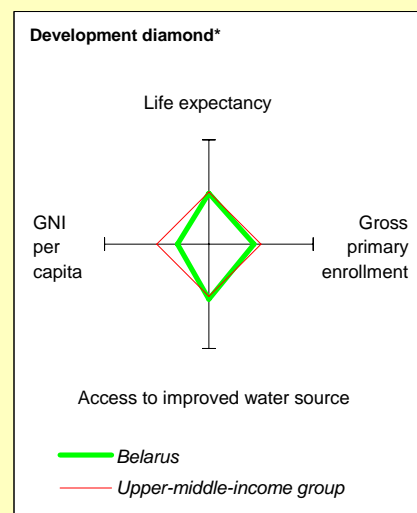


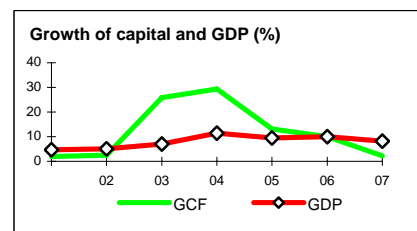
Belarus at a glance

9/24/08

	Belarus	Europe & Central Asia	Upper-middle-income		
POVERTY and SOCIAL					
2007					
Population, mid-year (millions)	9.7	445	823		
GNI per capita (Atlas method, US\$)	4,220	6,052	6,987		
GNI (Atlas method, US\$ billions)	40.9	2,694	5,750		
Average annual growth, 2001-07					
Population (%)	-0.5	0.0	0.7		
Labor force (%)	-0.1	0.5	1.3		
Most recent estimate (latest year available, 2001-07)					
Poverty (% of population below national poverty line)	19		
Urban population (% of total population)	73	64	75		
Life expectancy at birth (years)	69	69	71		
Infant mortality (per 1,000 live births)	12	23	22		
Child malnutrition (% of children under 5)	1		
Access to an improved water source (% of population)	100	95	95		
Literacy (% of population age 15+)	..	97	93		
Gross primary enrollment (% of school-age population)	96	97	111		
Male	97	98	112		
Female	95	96	109		
KEY ECONOMIC RATIOS and LONG-TERM TRENDS					
	1987	1997	2006	2007	
GDP (US\$ billions)	..	14.1	36.9	44.8	
Gross capital formation/GDP	..	26.8	30.4	28.0	
Exports of goods and services/GDP	..	59.9	59.9	57.3	
Gross domestic savings/GDP	..	21.0	26.1	18.9	
Gross national savings/GDP	..	21.0	26.3	18.8	
Current account balance/GDP	..	-6.1	-4.1	-7.5	
Interest payments/GDP	..	0.4	0.2	..	
Total debt/GDP	..	14.7	16.6	..	
Total debt service/exports	..	2.4	3.3	..	
Present value of debt/GDP	14.2	..	
Present value of debt/exports	23.3	..	
	1987-97	1997-07	2006	2007	2007-11
<i>(average annual growth)</i>					
GDP	-5.8	7.2	10.0	8.2	5.8
GDP per capita	-5.7	7.6	10.5	8.5	6.3
Exports of goods and services	-11.1	8.0	9.9	8.2	8.1



	1987	1997	2006	2007
STRUCTURE of the ECONOMY				
<i>(% of GDP)</i>				
Agriculture	..	15.4	9.3	8.8
Industry	..	41.2	42.0	39.9
Manufacturing	..	34.8	32.8	31.1
Services	..	43.4	48.7	51.3
Household final consumption expenditure	..	58.6	53.9	61.6
General gov't final consumption expenditure	..	20.3	19.9	19.5
Imports of goods and services	..	65.7	64.2	66.4
	1987-97	1997-07	2006	2007
<i>(average annual growth)</i>				
Agriculture	-5.1	4.5	9.9	0.0
Industry	-7.5	9.6	9.9	0.0
Manufacturing	-6.2	9.9	9.9	0.0
Services	-4.9	7.0	10.1	20.2
Household final consumption expenditure	-5.1	8.6	10.0	3.4
General gov't final consumption expenditure	-6.2	2.8	9.9	6.6
Gross capital formation	-12.1	10.0	9.9	2.1
Imports of goods and services	-16.3	9.2	9.9	1.3



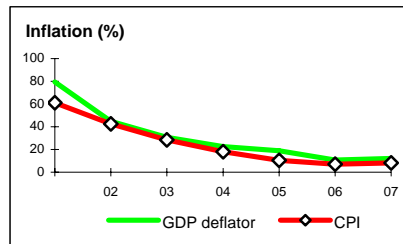
Note: 2007 data are preliminary estimates.

This table was produced from the Development Economics LDB database.

* The diamonds show four key indicators in the country (in bold) compared with its income-group average. If data are missing, the diamond will be incomplete.

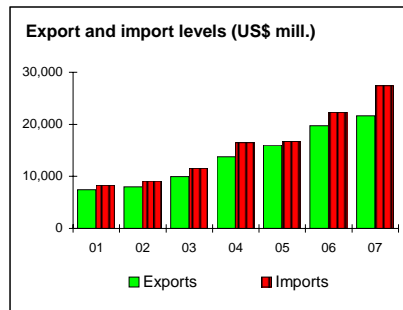
PRICES and GOVERNMENT FINANCE

	1987	1997	2006	2007
Domestic prices				
<i>(% change)</i>				
Consumer prices	..	63.8	7.0	8.1
Implicit GDP deflator	..	71.6	10.7	12.1
Government finance				
<i>(% of GDP, includes current grants)</i>				
Current revenue	..	43.2	48.2	46.8
Current budget balance	..	7.7	11.1	7.8
Overall surplus/deficit	..	-1.3	1.4	-0.6



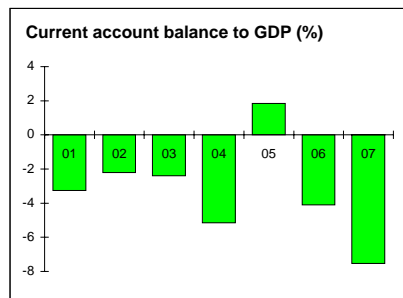
TRADE

	1987	1997	2006	2007
<i>(US\$ millions)</i>				
Total exports (fob)	..	7,301	19,739	21,633
Food and agricultural raw materials	..	605	1,438	..
Mineral products	..	668	7,667	..
Manufactures	..	5,160	8,711	9,086
Total imports (cif)	..	8,689	22,323	27,389
Food	..	920	1,468	..
Fuel and energy	..	2,242	7,395	..
Capital goods	..	1,474	2,413	2,587
Export price index (2000=100)	..	103	168	174
Import price index (2000=100)	..	99	135	164
Terms of trade (2000=100)	..	104	124	106



BALANCE of PAYMENTS

	1987	1997	2006	2007
<i>(US\$ millions)</i>				
Exports of goods and services	..	7,838	22,137	25,032
Imports of goods and services	..	8,691	23,723	29,028
Resource balance	..	-853	-1,586	-3,996
Net income	..	-85	-107	231
Net current transfers	..	78	182	395
Current account balance	..	-859	-1,512	-3,369
Financing items (net)	..	784	1,510	4,053
Changes in net reserves	..	75	1	-683
Memo:				
Reserves including gold (US\$ millions)	..	394	1,383	2,066
Conversion rate (DEC, local/US\$)	..	26.0	2,144.6	2,146.1



EXTERNAL DEBT and RESOURCE FLOWS

	1987	1997	2006	2007
<i>(US\$ millions)</i>				
Total debt outstanding and disbursed	..	2,083	6,124	..
IBRD	..	124	50	42
IDA	..	0	0	0
Total debt service	..	191	733	..
IBRD	..	8	18	19
IDA	..	0	0	0
Composition of net resource flows				
Official grants	..	40	42	..
Official creditors	..	43	1	..
Private creditors	..	-28	264	..
Foreign direct investment (net inflows)	..	352	354	..
Portfolio equity (net inflows)	..	0	-1	..
World Bank program				
Commitments	..	0	50	0
Disbursements	..	13	5	7
Principal repayments	..	0	15	16
Net flows	..	13	-10	-9
Interest payments	..	8	3	3
Net transfers	..	6	-13	-12

