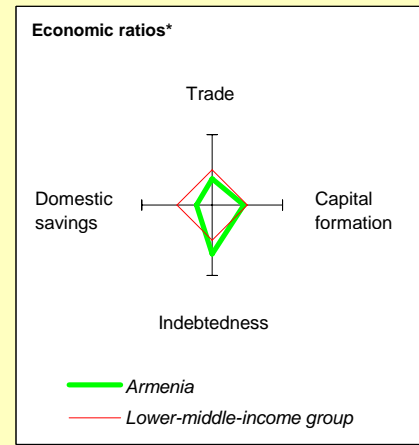
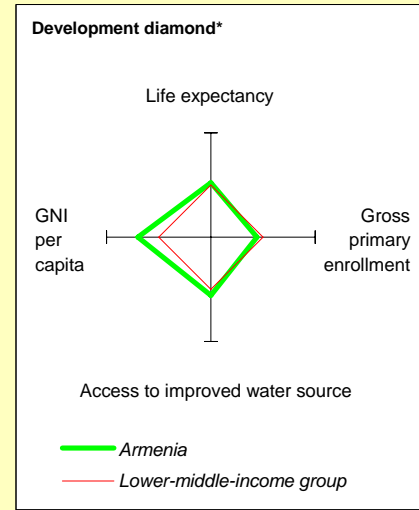


Armenia at a glance

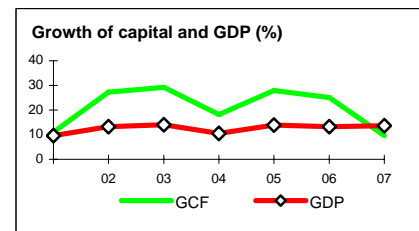
9/24/08

	Armenia	Europe & Central Asia	Lower-middle-income		
POVERTY and SOCIAL					
2007					
Population, mid-year (<i>millions</i>)	3.0	445	3,437		
GNI per capita (<i>Atlas method, US\$</i>)	2,640	6,052	1,887		
GNI (<i>Atlas method, US\$ billions</i>)	7.9	2,694	6,485		
Average annual growth, 2001-07					
Population (%)	-0.4	0.0	1.1		
Labor force (%)	-0.3	0.5	1.5		
Most recent estimate (latest year available, 2001-07)					
Poverty (% of population below national poverty line)	51		
Urban population (% of total population)	64	64	42		
Life expectancy at birth (<i>years</i>)	72	69	69		
Infant mortality (<i>per 1,000 live births</i>)	21	23	41		
Child malnutrition (% of children under 5)	4	..	25		
Access to an improved water source (% of population)	98	95	88		
Literacy (% of population age 15+)	99	97	89		
Gross primary enrollment (% of school-age population)	98	97	111		
Male	96	98	112		
Female	100	96	109		
KEY ECONOMIC RATIOS and LONG-TERM TRENDS					
	1987	1997	2006	2007	
GDP (<i>US\$ billions</i>)	..	1.6	6.4	9.2	
Gross capital formation/GDP	..	19.1	33.6	31.7	
Exports of goods and services/GDP	..	20.3	22.0	19.0	
Gross domestic savings/GDP	..	-18.9	19.2	16.9	
Gross national savings/GDP	..	0.3	31.6	29.1	
Current account balance/GDP	..	-18.7	-3.8	18.7	
Interest payments/GDP	..	0.8	0.3	..	
Total debt/GDP	..	38.9	32.5	..	
Total debt service/exports	..	5.1	7.0	..	
Present value of debt/GDP	23.0	..	
Present value of debt/exports	61.9	..	
	1987-97	1997-07	2006	2007	2007-11
<i>(average annual growth)</i>					
GDP	-6.9	10.7	13.3	13.7	7.6
GDP per capita	-5.1	11.2	13.6	14.0	7.6
Exports of goods and services	-28.4	16.5	-4.3	9.1	13.3



STRUCTURE of the ECONOMY

	1987	1997	2006	2007
<i>(% of GDP)</i>				
Agriculture	..	32.0	19.6	18.3
Industry	..	33.2	43.6	43.6
Manufacturing	..	24.4	16.8	15.1
Services	..	34.8	36.8	38.1
Household final consumption expenditure	..	107.7	69.5	73.8
General gov't final consumption expenditure	..	11.2	11.3	9.2
Imports of goods and services	..	58.3	36.5	33.8
	1987-97	1997-07	2006	2007
<i>(average annual growth)</i>				
Agriculture	-1.3	6.2	0.4	2.5
Industry	-15.9	13.7	18.5	11.8
Manufacturing	-8.9	6.5	-1.1	3.0
Services	7.3	11.7	19.4	24.3
Household final consumption expenditure	-3.9	6.8	14.1	16.4
General gov't final consumption expenditure	-2.0	8.7	19.8	17.4
Gross capital formation	-9.8	17.8	25.0	9.6
Imports of goods and services	-19.8	9.6	6.7	17.1



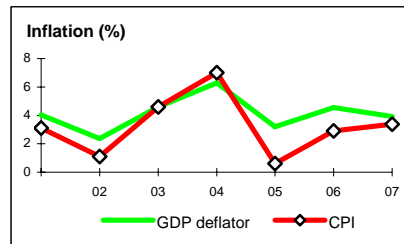
Note: 2007 data are preliminary estimates.

This table was produced from the Development Economics LDB database.

* The diamonds show four key indicators in the country (in bold) compared with its income-group average. If data are missing, the diamond will be incomplete.

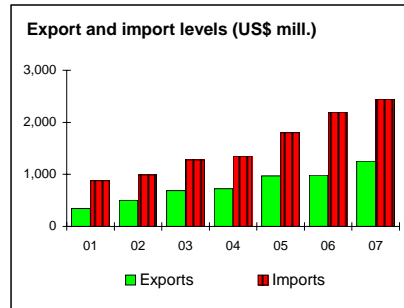
PRICES and GOVERNMENT FINANCE

	1987	1997	2006	2007
Domestic prices				
<i>(% change)</i>				
Consumer prices	..	14.0	2.9	3.4
Implicit GDP deflator	..	17.7	4.6	3.9
Government finance				
<i>(% of GDP, includes current grants)</i>				
Current revenue	..	19.7	16.0	18.3
Current budget balance	..	-1.7	2.6	2.4
Overall surplus/deficit	..	-5.8	-1.5	-2.0



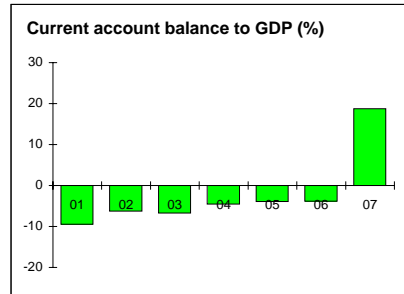
TRADE

	1987	1997	2006	2007
<i>(US\$ millions)</i>				
Total exports (fob)	..	232	985	1,253
Gold, jewelry, and other precious stones	..	55	301	..
Machinery and mechanical equipment	..	32	21	..
Manufactures	..	100	310	349
Total imports (cif)	..	892	2,192	2,449
Food	..	273	341	..
Fuel and energy	..	208	351	..
Capital goods	..	118	501	647
Export price index (2000=100)	104	116
Import price index (2000=100)	122	135
Terms of trade (2000=100)	85	86



BALANCE of PAYMENTS

	1987	1997	2006	2007
<i>(US\$ millions)</i>				
Exports of goods and services	..	330	1,407	1,708
Imports of goods and services	..	953	2,328	3,032
Resource balance	..	-622	-921	792
Net income	..	99	99	104
Net current transfers	..	217	580	822
Current account balance	..	-307	-242	1,719
Financing items (net)	..	354	614	-1,413
Changes in net reserves	..	-47	-372	-306
Memo:				
Reserves including gold (US\$ millions)	..	239	1,072	1,365
Conversion rate (DEC, local/US\$)	..	490.6	416.0	342.1



EXTERNAL DEBT and RESOURCE FLOWS

	1987	1997	2006	2007
<i>(US\$ millions)</i>				
Total debt outstanding and disbursed	..	638	2,073	..
IBRD	..	10	6	5
IDA	..	240	841	965
Total debt service	..	24	167	..
IBRD	..	1	1	1
IDA	..	1	13	14
Composition of net resource flows				
Official grants	..	34	56	..
Official creditors	..	100	66	..
Private creditors	..	0	108	..
Foreign direct investment (net inflows)	..	52	343	..
Portfolio equity (net inflows)	..	1	-1	..
World Bank program				
Commitments	..	107	57	96
Disbursements	..	77	64	93
Principal repayments	..	0	7	8
Net flows	..	77	57	85
Interest payments	..	2	7	7
Net transfers	..	76	50	78

